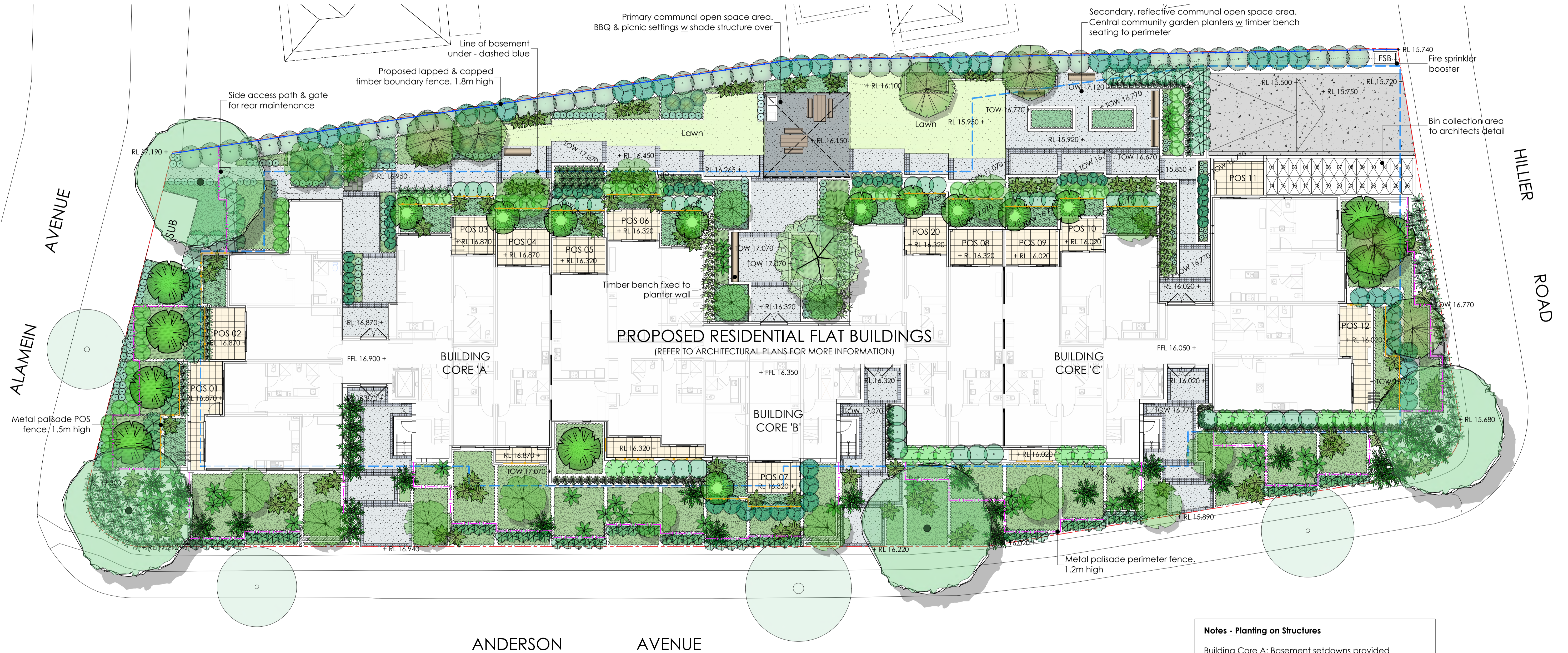


LEGEND

Existing trees to be retained Large canopy tree Small - medium tree Screen planting Shrub & perennial planting Groundcover planting Lawn area

Concrete driveway Coloured concrete Stone cobble Tiled patio to architects detail BBQ to architects specification Picnic setting Timber bench seat Stone steps

Lapped & capped timber boundary fence. 1.8m high Metal palisade POS fence. 1.5m high Metal palisade perimeter fence. 1.2m high Line of basement under Site boundary



Notes - Planting on Structures


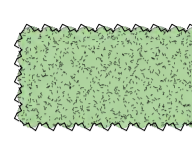

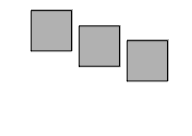
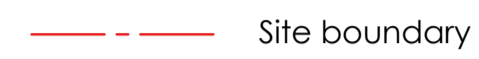
- Building Core A: Basement setbacks provided
- Building Core B: Shallow basement setbacks provided (suitable for lawn, larger planting to be located within raised planters as shown)
- Building Core C: No basement setbacks provided - all podium planting to be located within raised planters as shown

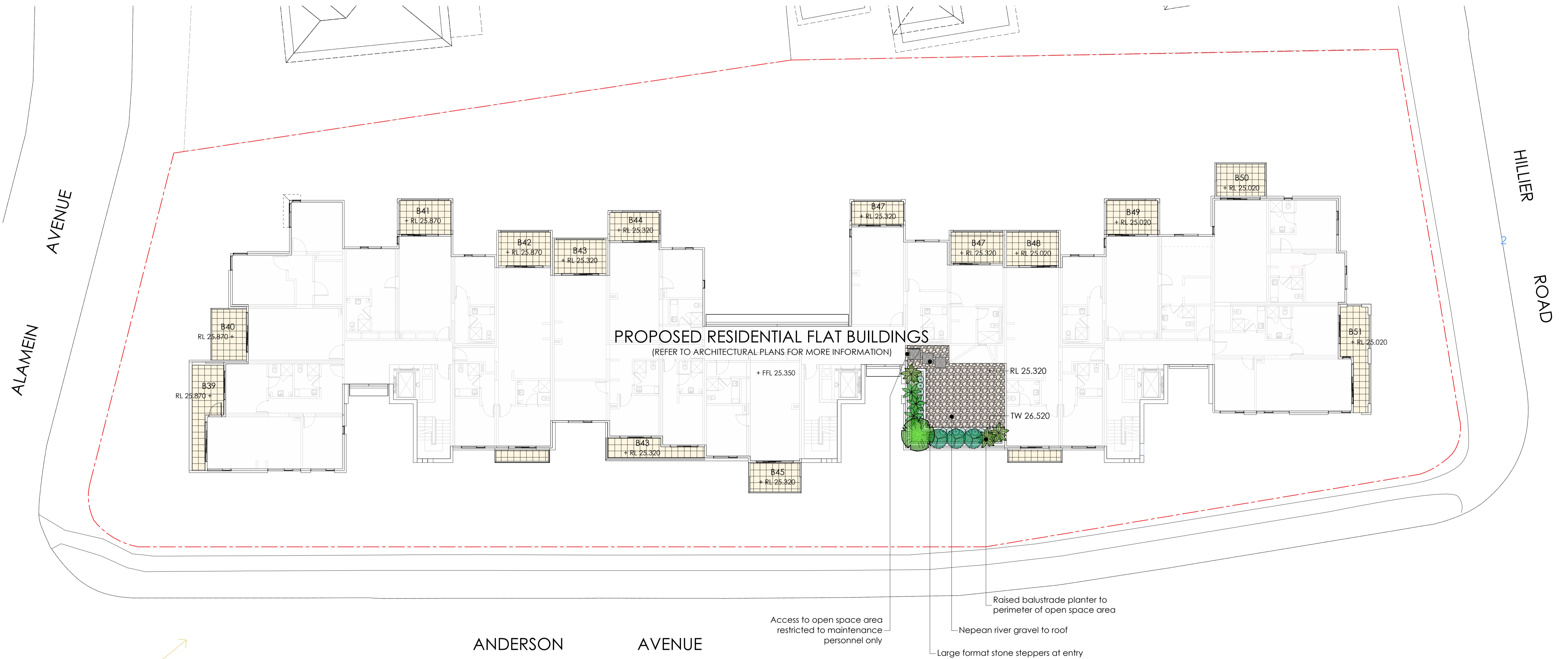


Issue	Code	Issue Description	By	Chk	Date
A	CA	FOR APPROVAL	TP	GT	07.11.19
P2	PRE	FOR CLIENT REVIEW	TP	GT	29.10.19
P1	PRE	FOR CLIENT REVIEW	TP	GT	16.10.19

PRE - Preliminary CA - Council Approval T - Tender CON - Construction

LEGEND

-  Shrub & perennial planting
-  Groundcover planting
-  Nepean river gravel
-  Stone steppers
-  Site boundary



Issue	Code	Issue Description	By	Chk	Date
A	CA	FOR APPROVAL	TP	GT	07.11.19
P2	PRE	FOR CLIENT REVIEW	TP	GT	29.10.19
P1	PRE	FOR CLIENT REVIEW	TP	GT	16.10.19

PRE - Preliminary CA - Council Approval T - Tender CON - Construction

INDICATIVE PLANTING SCHEDULE:

1-9 ANDERSON AVENUE, LIVERPOOL

SYM	BOTANICAL NAME	COMMON NAME	HEIGHT	SPACING	POT SIZE
CANOPY TREES					
	<i>Corymbia maculata</i>	Spotted Gum	20m	As Shown	75L
	<i>Eucalyptus microcorys</i>	Tallowwood	25m	As Shown	75L
	<i>Eucalyptus moluccana</i>	Grey Box	25m	As Shown	75L
	<i>Flindersia australis</i>	Crows Ash	15m	As Shown	75L
	<i>Lophostemon confertus</i>	Brush Box	15m	As Shown	75L
	<i>Magnolia grandiflora</i> 'Exmouth'	Bull Bay Magnolia	12m	As Shown	75L
SMALL - MEDIUM TREES					
	<i>Banksia integrifolia</i>	Coast Banksia	8m	As Shown	45L
	<i>Ceratopetalum gummiferum</i>	NSW Christmas Bush	6m	As Shown	45L
	<i>Citrus sinensis</i> 'Washington Navel'	Orange	4m	As Shown	45L
	<i>Corymbia eximia</i>	Yellow Bloodwood	10m	As Shown	45L
	<i>Elaeocarpus eumundi</i>	Eumundi Quandong	8m	As Shown	45L
	<i>Elaeocarpus reticulatus</i>	Blueberry Ash	8m	As Shown	45L
	<i>Hakea salicifolia</i>	Willow-leaved Hakea	5m	As Shown	45L
	<i>Magnolia grandiflora</i> 'Little Gem'	Magnolia	5m	1.5m	300mm
	<i>Waterhousea floribunda</i>	Weeping Lilly Pilly	10m	As Shown	45L
SCREEN SHRUBS					
	<i>Acmena smithii</i> 'Sublime'	Lilly Pilly	3m	1.2m	300mm
	<i>Murraya paniculata</i>	Orange Jessamine	4m	1.2m	300mm
	<i>Photinia</i> 'Red Robin'	Photinia	3m	1.2m	300mm
	<i>Pittosporum tenuifolium</i> 'James Stirling'	Pittosporum	2.5m	1.2m	300mm
	<i>Syzygium</i> 'Resilience'	Lilly Pilly	3m	1.2m	300mm
	<i>Viburnum odoratissimum</i>	Sweet Viburnum	3m	1.2m	300mm
SHRUBS & PERENNIALS					
	<i>Arthropodium cirratum</i>	NZ Rock Lily	0.5m	2/m ²	200mm
	<i>Asplenium australasicum</i>	Birds Nest Fern	1m	1/m ²	200mm
	<i>Bambusa textilis</i> var. <i>gracilis</i>	Bamboo 'S. Weavers'	4m	750mm	300mm
	<i>Blechnum gibbum</i> 'Silver Lady'	Silver Lady Fern	1m	1.2m	200mm
	<i>Callistemon viminalis</i> 'Better John'	Bottlebrush	1.2m	1/m ²	200mm
	<i>Callistemon viminalis</i> 'Slim'	Bottlebrush	2.5m	1.2m	200mm
	<i>Dodonaea viscosa</i> <i>purpurea</i>	Purple Hop Bush	2m	1.5m	200mm
	<i>Doryanthes excelsa</i>	Gynea Lily	2m	1/m ²	200mm
	<i>Indigofera australis</i>	Australian Indigo	2m	1/m ²	200mm
	<i>Kunzea ambigua</i>	Tick Bush	3m	1/m ²	200mm
	<i>Macrozamia communis</i>	Burrawang	1.5m	1/m ²	300mm
	<i>Philodendron</i> 'Xanadu'	Philodendron	1m	2/m ²	200mm
	<i>Rhaphiolepis indica</i> 'Oriental Pearl'	Indian Hawthorn	1.5m	1.5m	200mm
	<i>Teopaea speciosissima</i>	Waratah	3m	1.5m	200mm
	<i>Westringia</i> 'Wynyabbie Gem'	Coast Rosemary	1.5m	1m	200mm
GRASSES & GROUNDCOVERS					
	<i>Agapanthus</i> 'Guilfoyle'	Agapanthus	0.75m	750mm	140mm
	<i>Asplenium flabellifolium</i>	Necklace Fern	0.1m	3/m ²	75mm tube
	<i>Carpobrotus glaucescens</i>	Pigface	0.2m	2/m ²	140mm
	<i>Carex appressa</i>	Tall Sedge	0.5m	5/m ²	140mm
	<i>Casuarina glauca</i> 'Cousin It'	Prostrate Sheoak	0.3m	3/m ²	140mm
	<i>Dianella caerulea</i> 'Breeze'	Blue Flax Lily	0.5m	3/m ²	140mm
	<i>Dichondra repens</i>	Kidney Weed	0.1m	5/m ²	140mm
	<i>Doodia aspera</i>	Prickly Rasp Fern	0.3m	7/m ²	75mm tube
	<i>Ficinia nodosa</i>	Knobby Club Rush	0.7m	4/m ²	140mm
	<i>Grevillea</i> 'Bronze Rambler'	Grevillea	0.3m	1/m ²	140mm
	<i>Hedera canariensis</i>	Canary Islands Ivy	0.3m	1/m ²	140mm
	<i>Hibbertia scandens</i>	Snake Vine	0.3m	2/m ²	140mm
	<i>Juncus usitatus</i>	Common Rush	1m	3/m ²	140mm
	<i>Liriope muscari</i> 'Evergreen Giant'	Liriope	0.8m	750mm	140mm
	<i>Lomandra</i> 'Tanika'	Mat Rush	0.7m	3/m ²	140mm
	<i>Myoporum parvifolium</i>	Creeping boobialla	0.2m	2/m ²	140mm
	<i>Poa labillardieri</i> 'Eskdale'	Tussock Grass	0.7m	3/m ²	140mm
TURF					
	<i>Stenotaphrum</i> 'Sapphire'	Buffalo	-	-	-

CANOPY TREES



Corymbia maculata



Eucalyptus microcorys



Flindersia australis



Magnolia grandiflora 'Exmouth'

SMALL-MEDIUM TREES



Banksia integrifolia



Elaeocarpus eumundi



Hakea salicifolia



Waterhousea floribunda

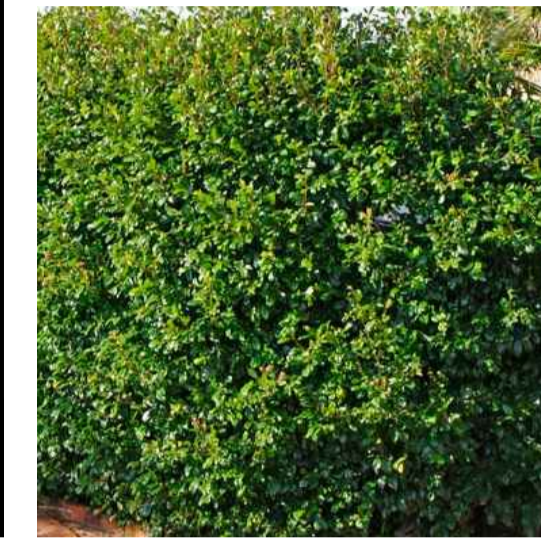
SCREENING SHRUBS



Acmena smithii 'Sublime'



Photinia 'Red Robin'

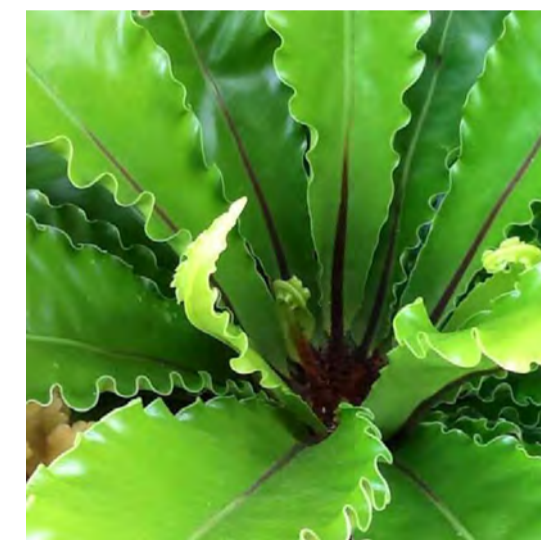


Syzygium 'Resilience'



Viburnum odoratissimum

SHRUBS & PERENNIALS



Asplenium australasicum



Bambusa textilis var. gracilis



Blechnum gibbum 'Silver Lady'



Callistemon viminalis 'Slim'



Dodonaea viscosa purpurea



Doryanthes excelsa

GRASSES & GROUNDCOVERS



Kunzea ambigua



Indigofera australis



Macrozamia communis



Philodendron 'Xanadu'



Rhaphiolepis indica 'Oriental Pearl'



Westringia 'Wynyabbie Gem'



Agapanthus 'Guilfoyle'



Asplenium flabellifolium



Carex appressa



Dichondra repens



Doodia aspera



Ficinia nodosa



Grevillea 'Bronze Rambler'



Hibbertia scandens



Juncus usitatus



Liriope muscari 'Evergreen Giant'



Myoporum parvifolium



Poa labillardieri 'Eskdale'

DIMENSIONS :

All dimensions are in millimetres unless otherwise noted. Do not scale from this drawing. Verify all dimensions on site prior to construction.

CIVIL, STRUCTURAL, HYDRAULIC, ELECTRICAL AND SPECIALIST WATER FEATURE WORKS :
Refer to specialist and consultant's drawings for all information contained within these documents relating to and nominated as specialist and consultant work. Specialist and consultant drawing information contained in the landscape documents are indicative only and not for construction or certification purposes.

Issue	Code	Issue Description	By	Chk	Date
A	CA	FOR APPROVAL	TP	GT	07.11.19
P2	PRE	FOR CLIENT REVIEW	TP	GT	29.10.19
P1	PRE	FOR CLIENT REVIEW	TP	GT	16.10.19

PRE - Preliminary CA - Council Approval T - Tender CON - Construction

PROJECT

**PROPOSED RESIDENTIAL
FLAT BUILDINGS**
1-7 ANDERSON AVENUE &
12 EL ALAMEIN AVENUE
LIVERPOOL

DRAWING TITLE

PLANTING SCHEDULE
& PALETTE

CLIENT

BCL2 LIMITED

Drawn : TP
Designed : TP
Project No. : D329

SHEET NUMBER : D329_LP_03
REVISION : A

IRRIGATION SYSTEM

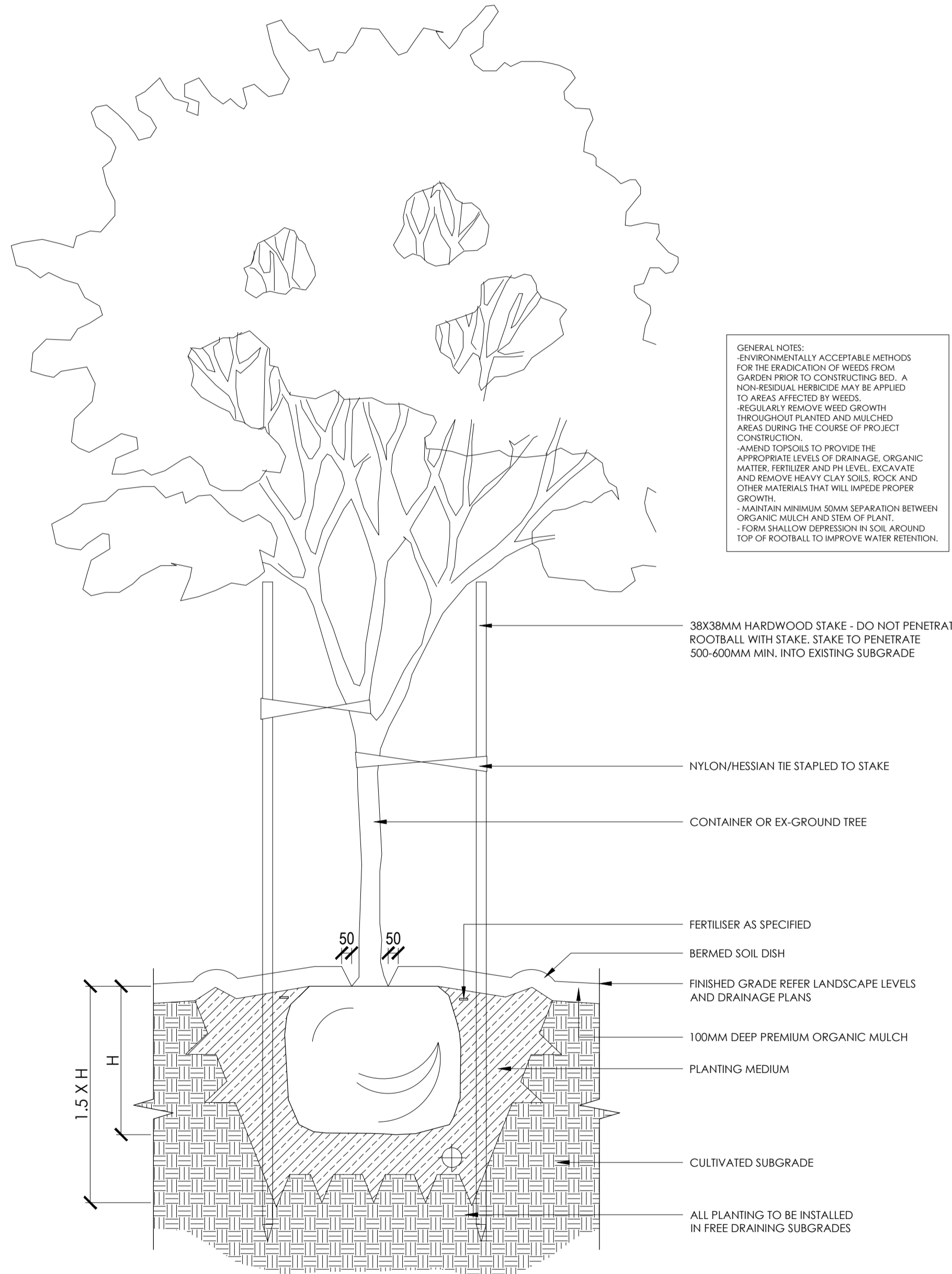
IRRIGATION SYSTEM: SUPPLY AN AUTOMATIC WATERING SYSTEM USING 'TORO IRRIGATION SYSTEM' OR SIMILAR APPROVED, WITH AREA-SPECIFIC SPRINKLER HEADS AND LOW DENSITY, RUBBER MODIFIED POLYPROPYLENE RETICULATION TO INCLUDE FILTERS, BENDS, JUNCTIONS, ENDS AND OTHER ANCILLARY EQUIPMENT. A SCHEMATIC PLAN OF THE PROPOSED IRRIGATION SYSTEM IS TO BE PREPARED BY A SUITABLY QUALIFIED IRRIGATION CONTRACTOR, SHOWING SOLENOIDS, PIPE DIAMETERS, AND ALL NOZZLE AND TRICKLE ATTACHMENT TYPES (INCLUDING SPRAY/HEAD ANGLE), FOR REVIEW BY THE SUPERINTENDENT PRIOR TO INSTALLATION.

THE IRRIGATION CONTRACTOR IS TO LIAISE WITH THE HYDRAULIC ENGINEER AND COUNCIL AS NECESSARY TO ENSURE THE IRRIGATION SYSTEM CONFORMS WITH ALL COUNCIL AND WATER BOARD CODES AND REQUIREMENTS.

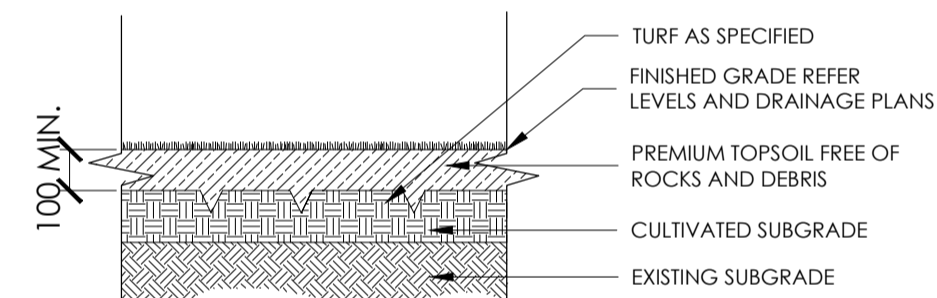
THE IRRIGATION SYSTEM IS TO INCLUDE AN AUTOMATIC CONTROLLER THAT PROVIDES FOR CUSTOMIZABLE SCHEDULING AND HOURLY MULTI-CYCLE OPERATION. THE CONTROLLER SHALL FEATURE A MANUAL OVERRIDE FUNCTION AND PROGRAMMING SHALL BE UNDERTAKEN BY THE IRRIGATION CONTRACTOR WHO SHALL ADVISE ALL RELEVANT PARTIES ON THE OPERATION OF THE SYSTEM. PROVISION OF SECURE HOUSING FOR THE AUTOMATIC IRRIGATION CONTROLLER IS TO BE POSITIONED IN A LOCATION CONFIRMED BY THE SUPERINTENDENT. WIRING TO CONNECT REMOTE SOLENOID LOCATIONS IS TO BE PROVIDED. THE CONTROLLER SHALL BE LOCATED IN A DRY PLACE, PROTECTED FROM THE WEATHER, AND ALL CABLE CONNECTIONS SHALL BE MADE WITH WATERPROOF CONNECTORS.

WATER SUPPLY POINTS ARE TO BE SUPPLIED BY THE BUILDER.

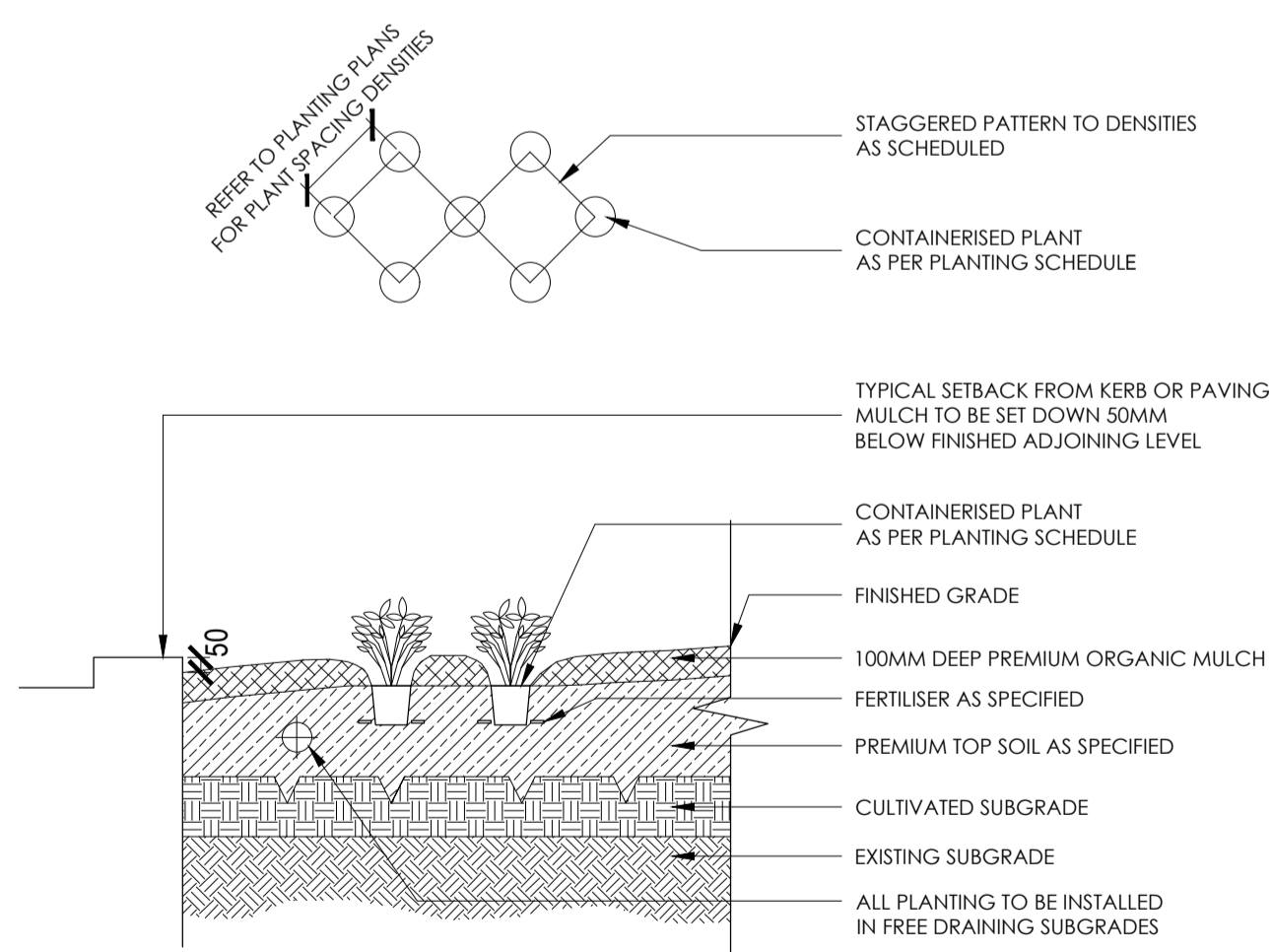
IT SHALL BE THE IRRIGATION CONTRACTOR'S RESPONSIBILITY TO ENSURE AND GUARANTEE SATISFACTORY OPERATION OF THE IRRIGATION SYSTEM. AFTER THE SYSTEM HAS BEEN INSTALLED TO THE SATISFACTION OF THE SUPERINTENDENT, THE INSTALLATION SHALL BE TESTED UNDER KNOWN WORKING CONDITIONS. ACCEPTANCE OF THE INSTALLED PLANT AND EQUIPMENT SHALL BE SUBJECT TO THESE BEING SATISFACTORY.



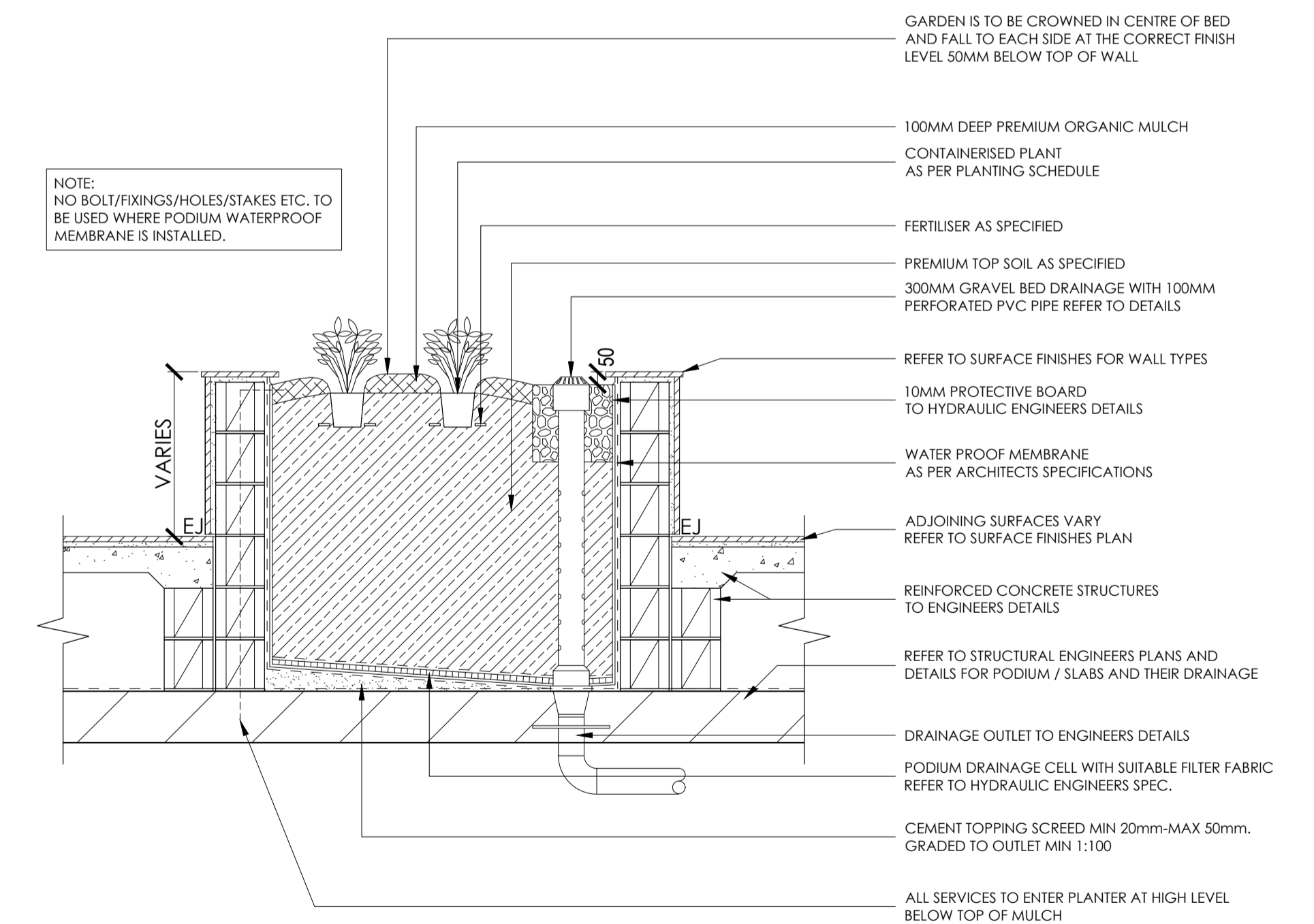
TREE PLANTING ON GRADE DETAIL
SCALE 1:20 @A1



TURF PLANTING DETAIL
SCALE 1:25 @A1



SHRUB PLANTING DETAIL
SCALE 1:25 @A1



SHRUB PLANTER ON PODIUM DETAIL
SCALE 1:20 @A1

PRELIMINARY SPECIFICATION

SERVICES

BEFORE LANDSCAPE WORK IS COMMENCED THE LANDSCAPE CONTRACTOR IS TO ESTABLISH THE POSITION OF ALL SERVICE LINES AND ENSURE TREE PLANTING IS CARRIED OUT A SUFFICIENT DISTANCE AWAY FROM THESE SERVICES TO AVOID CONFLICT. SERVICE LIDS, VENTS AND HYDRANTS SHALL BE LEFT EXPOSED AND NOT COVERED BY ANY LANDSCAPE FINISHES (TURFING, PAVING, GARDEN BEDS ETC.) FINISH ADJOINING SURFACES FLUSH WITH PIT LIDS.

ARBORIST MANAGEMENT OF TREE PROTECTION

AN ARBORIST WITH MINIMUM AGES QUALIFICATIONS IS TO BE CONTRACTED TO UNDERTAKE OR MANAGE THE INSTALLATION OF PROTECTIVE FENCING AND TO UNDERTAKE SUCH MEASURES AS THEY DEEM APPROPRIATE TO PRESERVE THE SUBJECT TREES TO BE RETAINED. THE ARBORIST IS TO BE RETAINED FOR THE ENTIRE CONTRACT PERIOD TO UNDERTAKE ONGOING MANAGEMENT AND REVIEW OF THE TREES.

PODIUM PLANTING

ENSURE AN ADEQUATE WATERPROOFING MEMBRANE TO ENGINEER'S DETAIL TO HAS BEEN APPLIED ALL PODIUM PLANTERS ON SITE. FOLLOWING APPLICATION OF THE MEMBRANE, CORFLUTE SHEETING IS TO BE APPLIED TO THE BOTTOM AND SIDES OF ALL PLANTERS TO PREVENT FUTURE RUPTURING. PODIUM PLANTERS ARE TO THEN INCLUDE AN APPROVED DRAINAGE CELL PRODUCT TO COMPREHENSIVELY COVER THE BOTTOM OF THE STRUCTURE. OVER THE DRAINAGE CELL, A GEOTEXTILE LINING IS TO BE INSTALLED, TURNED UP 300MM AND TAPED TO THE PLANTER SIDES TO ENSURE SOIL MIX DOES NOT ESCAPE INTO DRAINAGE OUTLETS/HOLES. INSTALL MIN. 50MM COARSE RIVER SAND OVER ALL GEOTEXTILE LINING PRIOR TO INSTALLATION OF A SUITABLE PLANTER SOIL MIX.

RETAINING WALLS

RETAINING WALLS AND ASSOCIATED DRAINAGE MATERIAL IS TO BE CONSTRUCTED TO THE STRUCTURAL ENGINEER'S DETAIL.

EXISTING SUB-GRADE IN PLANTING AREAS

TEST SUBSOIL DRAINAGE TO ALL TREE PLANTING POSITIONS AND PLANTING AREAS. IF NECESSARY EXCAVATE UNDER TREE PLANTING POSITION DOWN THROUGH IMPERMEABLE MATERIAL TO A PERMEABLE SUB-GRADE DEPTH. REMOVE EXCAVATED MATERIAL FROM SITE AND REPLACE WITH A POROUS MATERIAL AND SUITABLE GROWING MEDIUM FOR NOMINATED SPECIES. SETTLE BACKFILL TO PREVENT SUBSIDENCE.

FINISHED LEVELS AND GRADES

CONSTRUCT FINISHED GRADES TO THE FINISHED LEVELS SHOWN ON THE CIVIL DRAWINGS. ENSURE POSITIVE DRAINAGE AWAY FROM BUILDINGS, PLANTED AREAS AND PATHWAYS ARE TO DRAIN TO SPECIFIED DRAINAGE COLLECTION POINTS AS INDICATED ON THE HYDRAULIC ENGINEER'S DRAWINGS. ENSURE A MAXIMUM GRADE OF 1:4 TO ALL PLANTED AND TURFED AREAS.

DRAINAGE PITS

INSTALL METAL GRATE, PVC BODY DRAINAGE PITS AS INDICATED ON THE HYDRAULIC ENGINEER'S DRAWINGS. CONNECT PITS TO STORMWATER SYSTEM - BY PLUMBER.

PAVING

PAVEMENT SETOUT AS PER SETOUT PLAN. FINISHED LEVELS, MATERIALS AND PAVING INSTALLATION TO ARCHITECT'S SPECIFICATION.

SOIL

CULTIVATE ALL PLANTING AREAS AND SET DOWN SUB-GRADE TO ACCOMMODATE IMPORTED TOPSOIL. TO BE INSTALLED TO A MINIMUM 300MM DEPTH. IF DEEMED SUITABLE BY THE LANDSCAPE ARCHITECT, IMPORTED SITE SOIL MAY BE USED IN PLACE OF IMPORTED TOPSOIL PENDING COMPLIANCE WITH THE PROVISIONS OUTLINED IN AS4419.

MULCH

APPLY APPROVED ORGANIC MULCH (ANL 'FOREST FINES' OR SIMILAR) TO A DEPTH OF 75MM TO ALL PLANTED AREAS. ENSURE CLEARANCE TO PLANT STEMS AND RAKE TO AN EVEN SURFACE FINISHING 25MM BELOW ADJOINING LEVELS. ENSURE MULCH IS WATERED IN DURING INSTALLATION.

FERTILISER

FOR GENERAL PLANTED AREAS: APPLY APPROVED FERTILISER INTENDED FOR SLOW RELEASE OF PLANT NUTRIENTS OVER A PERIOD OF APPROXIMATELY NINE (9) MONTHS. THOROUGHLY MIX FERTILISER WITH PLANTING MIXTURE AT THE RECOMMENDED RATE AND IN ACCORDANCE WITH RECOGNISED HORTICULTURAL PRACTICE PRIOR TO INSTALLING PLANTS. FOR LAWN AREAS: APPROVED 'LAWN FOOD' OR EQUIVALENT SHALL BE THOROUGHLY MIXED THROUGH TOPSOIL PRIOR TO PLACING TURF. FOR ESTABLISHED TREE PLANTING: 'AGRIFORM PLANTING TABLETS' OR EQUIVALENT ARE TO BE APPLIED AT THE RECOMMENDED RATE WITHIN THE PLANTING MEDIUM ADJACENT TO THE BASE OF THE ROOT BALL AT TIME OF PLANTING.

PLANT MATERIAL

ALL PLANTS SUPPLIED ARE TO CONFORM WITH THOSE SPECIES LISTED IN THE PLANT SCHEDULE ON THE LANDSCAPE DRAWINGS. GENERALLY PLANTS SHALL BE: VIGOROUS, WELL ESTABLISHED, HARDENED OFF, OF GOOD FORM CONSISTENT WITH SPECIES OR VARIETY, NOT SOFT OR FORCED, FREE FROM DISEASE OR PESTS, HAVE LARGE HEALTHY ROOT SYSTEMS AND NO EVIDENCE OF HAVING BEEN RESTRICTED OR DAMAGED. TREES SHALL HAVE A LEADING SHOOT. IMMEDIATELY REJECT DRIED OUT, DAMAGED OR UNHEALTHY PLANT MATERIAL BEFORE PLANTING. ALL STOCK IS TO BE CONTAINER GROWN FOR A MINIMUM OF SIX (6) MONTHS PRIOR TO DELIVERY TO SITE.

STAKING AND TYING

STAKES SHALL BE STRAIGHT, UNPAINTED HARDWOOD FREE FROM KNOTS AND TWISTS, POINTED AT ONE END AND SIZED ACCORDING TO SIZE OF PLANTS TO BE STAKED.

A. 5 - 15 LITRE SIZE PLANT 1 x (1200X25X25MM)

B. 35 - 75 LITRE SIZE PLANT 2 x (1500X38X38MM)

C. 100 - 200 LITRE 3 x (1800X50X50MM)

TIES SHALL BE 50MM WIDE HESSIAN WEBBING OR APPROVED EQUIVALENT NAILED OR STAPLED TO STAKE. DRIVE STAKES A MINIMUM ONE THIRD OF THEIR LENGTH (AVOIDING DAMAGE TO THE ROOT SYSTEM) ON THE DOWNWARD SIDE OF THE PLANT.

TURF

TURF IS TO BE OF A SPECIES CONSISTENT WITH THAT SHOWN ON THE LANDSCAPE DRAWINGS AND IS TO HAVE AN EVEN THICKNESS OF NOT LESS THAN 25MM. OBTAIN TURF FROM AN APPROVED GROWER. DELIVER TO SITE WITHIN TWENTY FOUR (24) HOURS OF BEING CUT, AND LAY WITHIN TWENTY FOUR (24) HOURS OF BEING DELIVERED. TO PREPARE GRADED AREAS TO RECEIVE TURF: EXCAVATE THE AREA AND CULTIVATE SO AS TO ALLOW FOR IMPORTING OF 100MM OF TURF UNDERLAY SOIL. REMOVE ALL STONES OVER 20MM Ø AS WELL AS ALL WEEDS AND FOREIGN MATTER. SPREAD TURF UNDERLAY SOIL TO A DEPTH OF 100MM AND GRADE TO APPROPRIATE LEVELS TO ACHIEVE GENERAL EVEN GRADES TO DRAINAGE OUTLETS INSTALLED BY OTHERS. TURF AREAS ARE TO HAVE MINIMUM 1:50 CROSSFALL TO ENSURE MINIMUM DRAINAGE REQUIREMENTS. TURF IS TO BE LAID ALONG RESOLVED LAND CONTOURS WITH STAGGERED, CLOSE BUTTED, JOINTS SO THAT THE FINISHED TURF SURFACE IS FLUSH WITH ADJACENT FINISHED SURFACES OF PAVING AND THE LIKE. AS SOON AS PRACTICABLE AFTER LAYING, ROLL THE TURF WITH A ROLLER WEIGHING NOT MORE THAN 90KG PER METRE OF WIDTH. WATER AS NECESSARY TO KEEP THE SOIL MOIST TO A DEPTH OF 100MM. PROTECT NEWLY TURFED AREAS AGAINST TRAFFIC UNTIL GRASS IS ESTABLISHED. TWO (2) WEEKS AFTER INSTALLATION, APPLY APPROVED ORGANIC TOP DRESSING SOIL (ANL 'ORGANIC TOP DRESSING' OR SIMILAR) TO A DEPTH OF 15MM TO ALL TURFED AREAS. RUB THE DRESSING WELL INTO THE JOINTS AND CORRECT ANY UNEVENNESS IN THE TURF SURFACES.

TREATED PINE TIMBER EDGING

TIMBER EDGE: 100 X 25MM H4 TREATED PINE.

TIMBER STAKES: 50 X 50 X 500MM H4 TREATED PINE-SHARPENED AT ONE END.

INSTALL IN LOCATIONS SHOWN ON THE DRAWINGS FLUSH TO FINISHED SURFACE LEVELS.

TREES TO BE RETAINED

MARK TREES AND SHRUBS TO BE RETAINED WITH SUITABLE NON-INJURIOUS, EASILY VISIBLE AND REMOVABLE MEANS OF IDENTIFICATION CONSISTENT WITH THE TREE NUMBERING SYSTEM INDICATED ON THE LANDSCAPE DRAWINGS.

DIMENSIONS :

All dimensions are in millimetres unless otherwise noted. Do not scale from this drawing. Verify all dimensions on site prior to construction.

CIVIL, STRUCTURAL, HYDRAULIC, ELECTRICAL AND SPECIALIST WATER FEATURE WORKS :

Refer to specialist and consultant's drawings for all information contained within these documents relating to and nominated as specialist and consultant work. Specialist and consultant drawing information contained in the landscape documents are indicative only and not for construction or certification purposes.

Issue	Code	Issue Description	By	Chk	Date
A	CA	FOR APPROVAL	TP	GT	07.11.19
P2	PRE	FOR CLIENT REVIEW	TP	GT	29.10.19
P1	PRE	FOR CLIENT REVIEW	TP	GT	16.10.19

PRE - Preliminary CA - Council Approval T - Tender CON - Construction

PROJECT

PROPOSED RESIDENTIAL FLAT BUILDINGS
1-7 ANDERSON AVENUE & 12 EL ALAMEIN AVENUE
LIVERPOOL

DRAWING TITLE

DETAILS & SPECIFICATION

CLIENT

BCL2 LIMITED

Drawn : TP
Designed : TP
Project No. : D329
Scale As Shown

SHEET NUMBER : D329_LP_04
REVISION : A